

Can you read music?

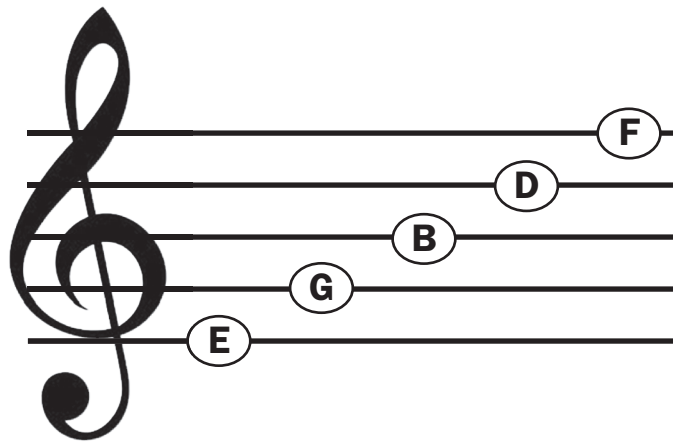


Reading music: THE BASICS

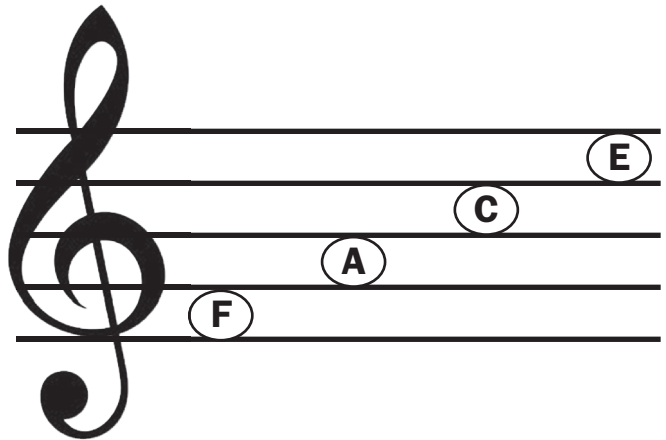
THE TREBLE CLEF

The treble clef has notes that can either sit on or above the staff line. Here's a simple way to remember which notes sit on or in between the staff lines:

Every **G**ood **B**oy **D**oes **F**ine



F **A** **C** **E**



Basics puzzle: match each note to the correct letter name

F **A** **C** **E**

